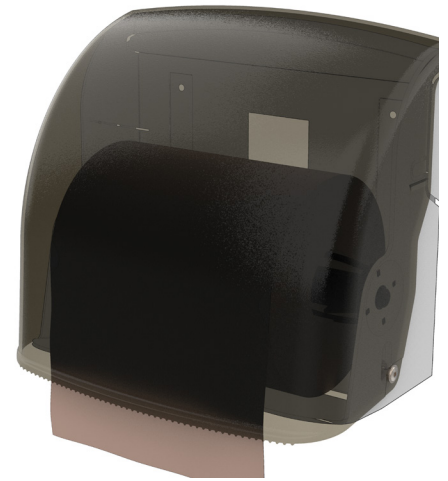




POLYJOHN®
there when you need us

TD04-1000

PJ PAPER TOWEL DISPENSER INSTALLATION INSTRUCTIONS



Specifications

Height	10 in	25.4 cm
Width	11 in	27.94 cm
Depth	7.5 in	19.05 cm
Weight	1.9 lb	0.86 kg

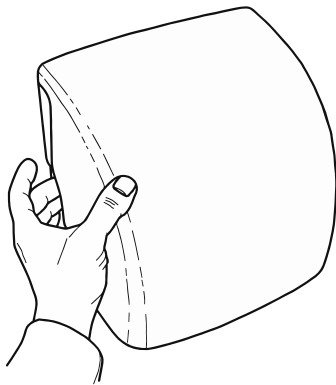
The TD04-1000 - PolyJohn Paper Towel Dispenser is an optional paper towel holder for either roll, or fold towels (single or multi-fold). Designed to fit most anywhere paper towels are needed. Shipped pre-assembled.

~Tools Required for Installation~

- Drill
- 13/64" Bit
- Rivet Gun

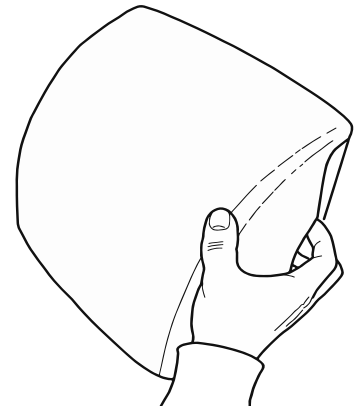
General Information

These dispensers are designed to accept towels that are no wider than 9-1/2" wide, whether using single, multi-fold, or a roll towel. The recommended towels are PRO's Choice Single Fold Towel Part #101474. NOTE: The use of a roll towel complies with ADA requirements.



Opening the Paper Towel Dispenser

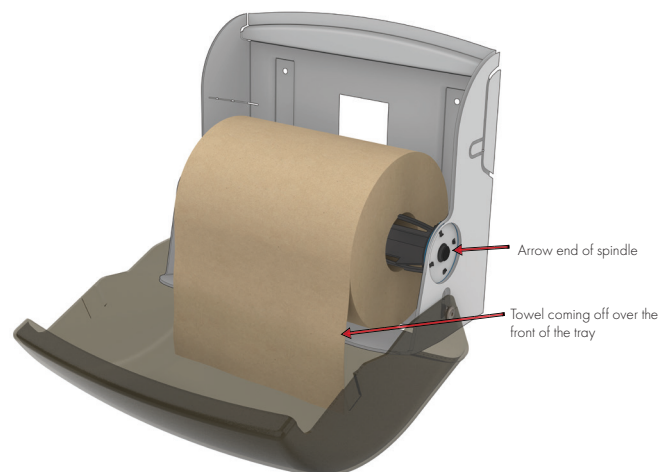
Position your hands on both sides of the dispenser cover (as shown). While pulling out on both sides lift up the cover and pull down towards yourself.



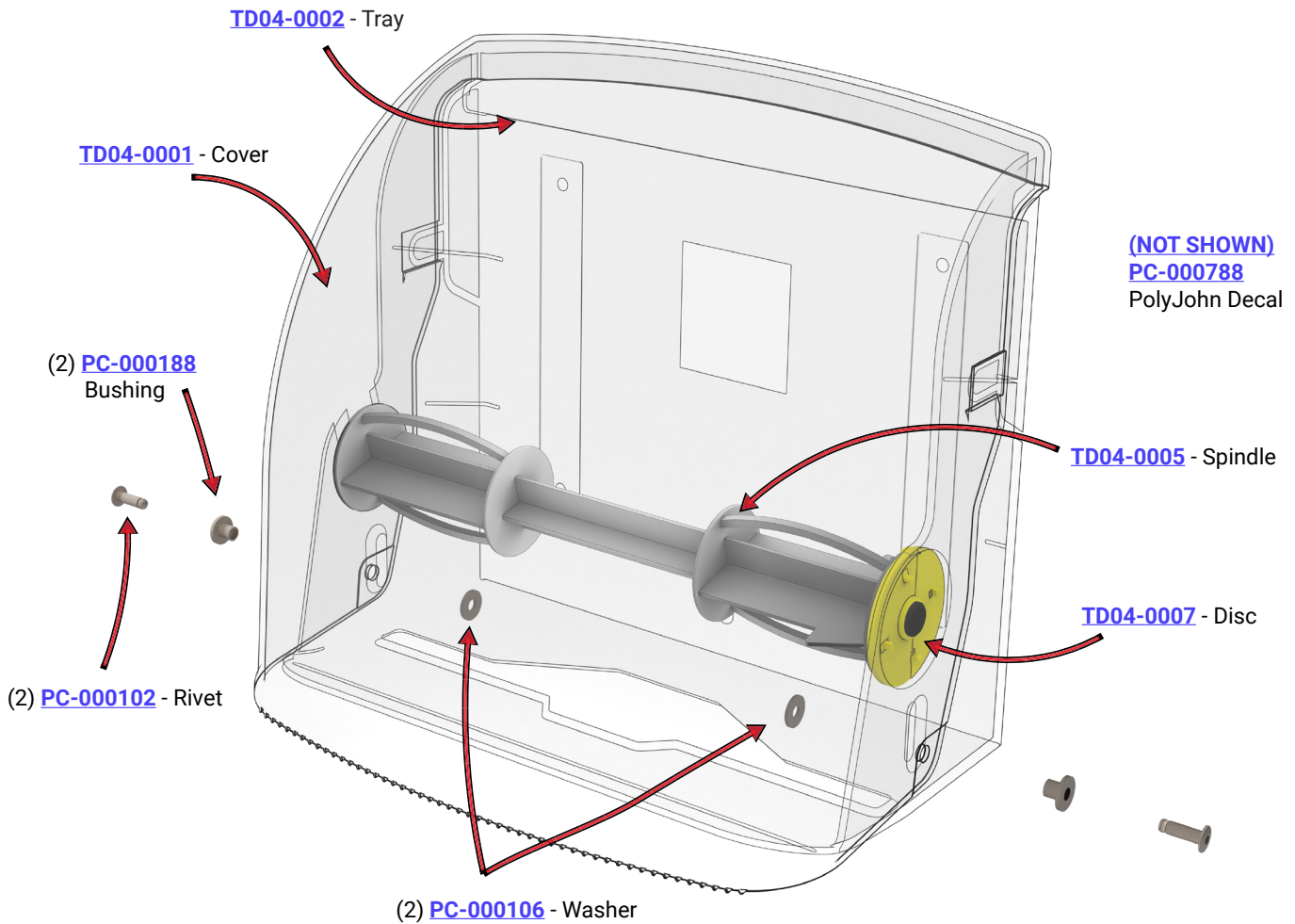
Filling the Dispenser

Filling with Fold Towels: Place the package of towels on the towel tray with the fold of the towel facing downward. Pull the first towel through the middle opening of the paper towel tray. Close the cover.

Filling with a Roll of Towels: Place the roll of towels on the spindle with the roll of towels coming off towards you with the arrow end of the spindle facing towards the right. Place the spindle into the right side of the dispenser first. Place the left side of the spindle into the groove on the left side of the dispenser and push down in place. Feed the roll of towels over the front of the paper towel tray. Close the cover.



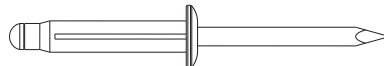
PAPER TOWEL DISPENSER EXPLODED VIEW



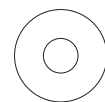
FULL SIZE SCALE FASTENERS



(4) PC-000102 Rivet



(4) PC-000105 Rivet



(4) PC-000106 Washer

INSTALLATION

Step 1: Open the Towel Dispenser

Step 2: Place the dispenser in the location in which it will be mounted (making sure to level). Using a 13/64" bit, drill holes through the drill spots that are in the back of the dispenser and through to the location in which you are mounting the dispenser (making sure to drill only into the mounting wall).

Step 3: For installation where an outside wall is accessible, rivet the PJ Paper Towel Dispenser in place from the outside with (4) PC-000102 Rivets and (4) PC-000106 Washers on the inside. If installing in a location where the opposite side of the wall is not accessible (such as an Applause sink, etc.), rivet in place using (4) PC-000105 Rivets with (4) PC-000106 Washers behind the heads of the rivets.

OUR MISSION STATEMENT

“PolyJohn is a family owned, state of the art, plastics manufacturing company dedicated to providing its employees with a work environment committed to excellence, and its customers with innovative products, services and technology that meet or exceed their requirements.”

THANK YOU FOR PURCHASING POLYJOHN PRODUCTS!



POLYJOHN USA
+1 800-292-1305
Whiting, Indiana
www.polyjohn.com

POLYJOHN INTERNATIONAL
UNITED KINGDOM
+44 (0) 1937-583333
Yorkshire, England
www.polyjohn.co.uk

POLYJOHN INTERNATIONAL
CZECH REPUBLIC
+420 608 876 983
Karlovy Vary, Czech Republic
www.polyjohn.eu

POLYJOHN SOUTHERN AFRICA
+27 (011) 615-3804
Johannesburg, South Africa
www.polyjohn.co.za

POLYJOHN CANADA
+1 800-465-9590
Oro Medonte, Ontario
www.polyjohn.ca
www.fr.polyjohn.ca

POLYJOHN LATIN AMERICA
+01 800-953-1307
Chihuahua, Mexico
www.polyjohn.mx

POLYJOHN AUSTRALIA
+61 7 3277 5727
Brisbane, Australia
www.totalsanitationsolutions.com.au

POLYJOHN NEW ZEALAND
+64 (0)22 387 7142
Auckland, New Zealand
www.polyjohn.co.nz

POLYJOHN SOUTH AMERICA
+57 318 696 7744
Bogotá, Colombia
www.polyjohn.com