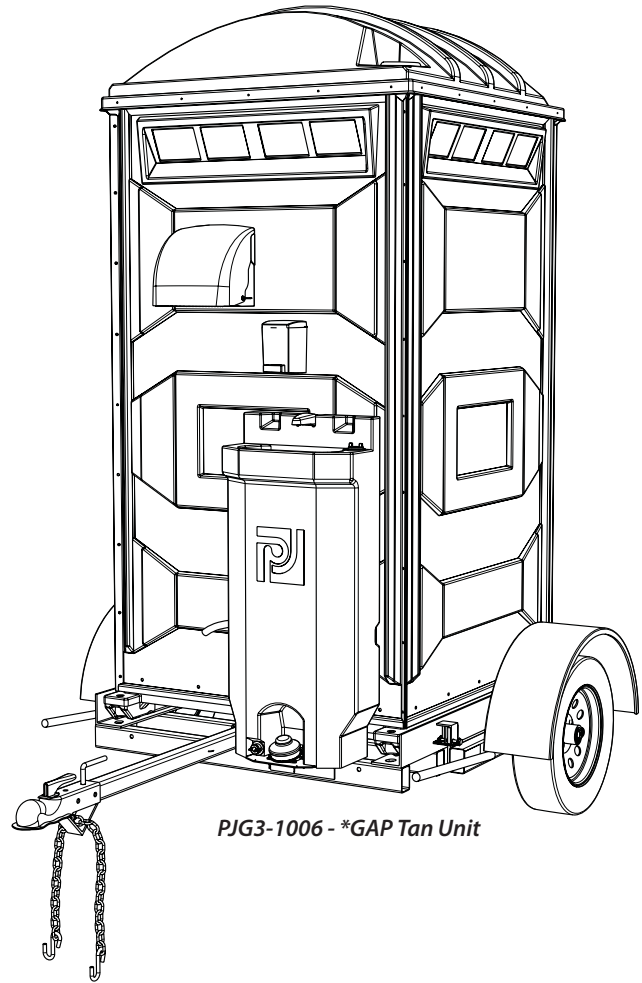


PJG3 Exterior Components Installation Instructions

**GAP Compliant Unit*
** Good Agricultural Practices*

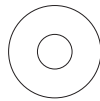
~~Tools Required~~

- Marker
- Liquid Soap
- Utility Knife
- Drill
- 13/64" Drill Bit
- 5/16" Drill Bit
- 2" Hole Saw
- 1-1/4" Hole Saw
- Phillips Screw Driver
- 7/16" Socket Wrench
- Rivet Gun w/3/16" tip

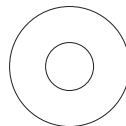


PJG3-1006 - *GAP Tan Unit

Full Size Scale Fasteners



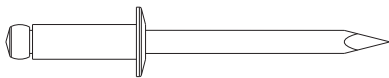
(7) PC-000106 Washer



(6) PC-000123 Washer



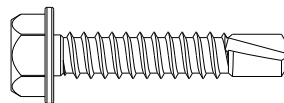
(2) PC-000140 Nylon Lock Nuts



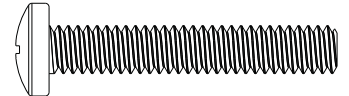
(7) PC-000102 Rivet



(2) PC-000142 Hex Head Bolt



(2) PC-000156 - Self-Tapping Screw



(2) PC-000175 Screws

POLYJOHN

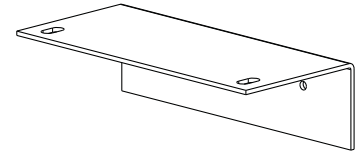
2500 Gaspar Ave.
Whiting, IN 46394
Phone: 800-292-1305
Fax: 219-659-0625
www.polyjohn.com

Assembly Instructions

NOTE: The PJG3-1006 Unit must already be mounted on the TU01-1000 - PJ Single Trailer Chassis prior to installation of the exterior components. For further information see the TU01-1000 - Single Trailer Assembly Instructions.

STEP 1: MOUNT PJG3-0020 BRACKET

Remove the (2) PC-000135 - Screws from the PS02-0003 - Foot Pump Plate (located on the bottom of the PS02-1000 - Hand Wash Stand). Line up the slotted holes on the bottom of the PJG3-0020 - PJG3 Gap Sink Bracket with those in the foot pump plate. Fasten the sink bracket to the foot pump plate using (2) PC-000142 - Hex Head Bolts with (2) PC-000123 - Washers. **NOTE: Do not tighten the bolts at this time.**



STEP 2: SINK DRAIN HOLE LOCATION

With a marker, mark the drain hole location for the sink drain hose approximately 9-3/4" in from the right side vertical rib and up 19-1/2" from the bottom edge of the rear wall panel. Cut a hole into the location marked using a 2" hole saw. **IMPORTANT: Make sure to cut into the wall panel only and not into the tank.** Cut a hole into the tank using a 1-1/4" hole saw (cutting through the hole just cut in the wall panel). From the outside push the PC-000417 - Uniseal into the wall panel hole.

STEP 3: PS02-1000 SINK INSTALLATION

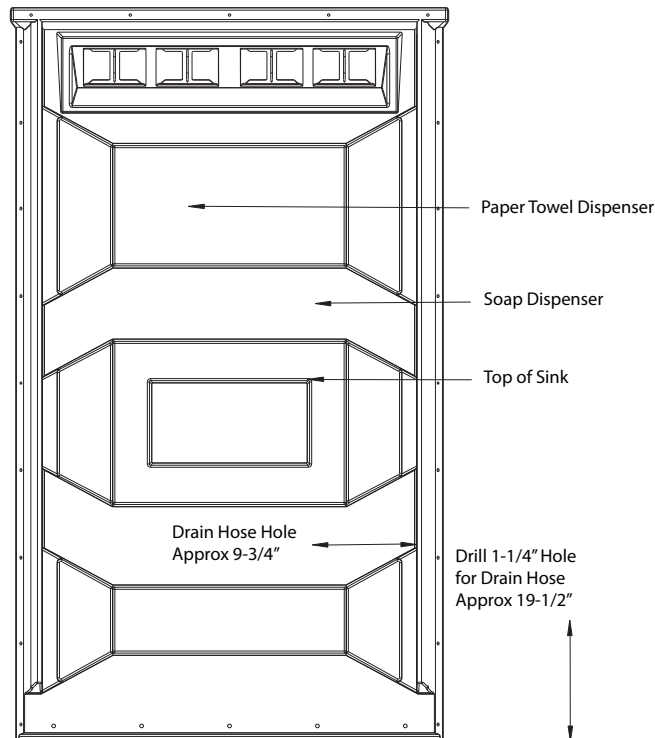
Place the sink into position against the rear wall panel with the left side of the sink flange against the chassis tongue receiver and the right side resting on top of the TU01-9160G - Left Skid Bracket on the TU01-0001GC - Trailer Chassis (make sure the hose is routed along the molded-in channel along the sink back). Push the hose end through the uniseal and into the tank. **NOTE: Using liquid soap will help lubricate the hose when feeding through the uniseal.** Drive (2) PC-000156 - Self-Tapping Screws through the holes located in the side of the bracket into the frame of the trailer chassis. Tighten the hex head bolts on the bottom of the sink (from Step 1 - the bracket to the foot pump plate). Using a 5/16" bit, drill into the two square recesses located near the top of the sink (to the left and right of the spigot, making sure to drill into the wall panel). With a 7/16" socket wrench and a phillips screwdriver, fasten the top of the sink to the wall by placing (2) PC-000175 - Screws with (2) PC-000123 - Washers into the holes just drilled from the outside with (2) PC-000123 - Washers and (2) PC-000140 - Nylon Lock Nuts on the inside.

STEP 4: PSD1-1000 SOAP DISPENSER INSTALLATION

Remove the top of the PSD1-1000 - Soap Dispenser by placing your hands on both sides of the dispenser and pressing up on the tabs of the lid. Remove the backing plate from the dispenser by pushing back on the tab at the top, and sliding the backing plate down. Place the backing plate up against the rear wall panel (centered in the rib just above the sink and to the left of the spigot). Using the top of the three mounting holes as a guide, drill three 13/64" holes into the wall panel. Rivet in place from the outside using (3) PC-000102 - Rivets with (3) PC-000106 - Washers on the inside. Place the body of the soap dispenser on the backing plate and snap the lid back on.

STEP 5: TD04-1000 PJ PAPER TOWEL INSTALLATION

Open up the TD04-1000 - Paper Towel Dispenser (for instructions see page 3). Place the dispenser up against the raised panel of the rear wall just below the fly screens (centering as far left as possible). Using the mounting holes as a drill guide, drill four 13/64" holes into the wall panel. Rivet in place using (4) PC-000102 - Rivets from the outside with (4) PC-000106 - Washers on the inside.



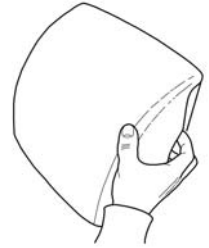
General Information

NOTE: These dispensers are designed to accept towels that are no wider than 9-1/2" wide, whether using single, multi-fold, or a roll towel. The recommended towels are the Georgia Pacific #23504 - single fold towel or the Baywest Ecosoft #46200 - roll towel. **NOTE:** The use of a roll towel complies with ADA requirements.



Opening the Paper Towel Dispenser

Position your hands on both sides of the dispenser cover (as shown). While pulling out on both sides lift up the cover and pull down towards yourself.

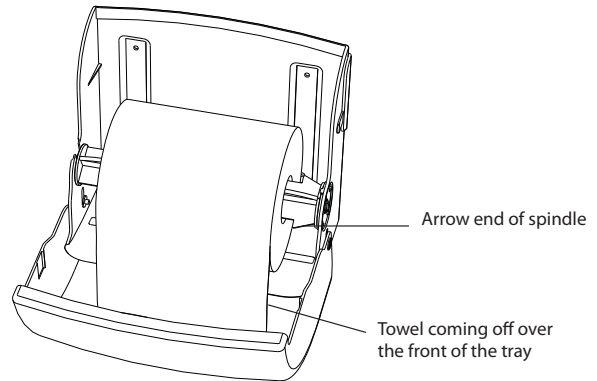
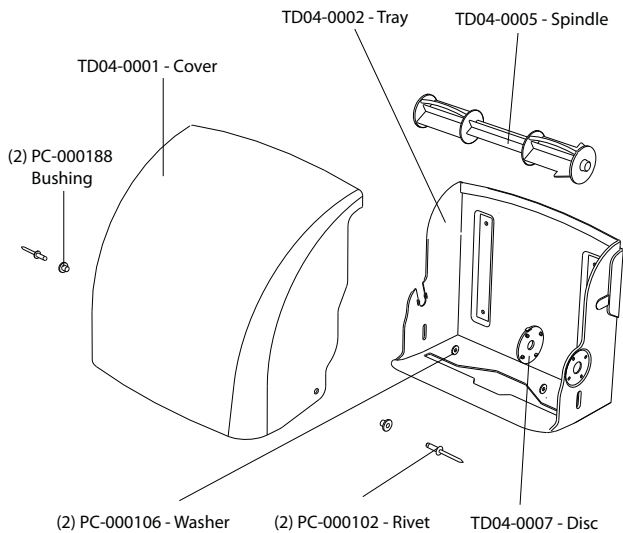


Filling the Dispenser

Filling with Fold Towels: Place the package of towels on the towel tray with the fold of the towel facing downward. Pull the first towel through the middle opening of the paper towel tray. Close the cover.

Filling with a Roll of Towels: Place the roll of towels on the spindle with the roll of towels coming off towards you with the arrow end of the spindle facing towards the right. Place the spindle into the right side of the dispenser first. Place the left side of the spindle into the groove on the left side of the dispenser and push down in place. Feed the roll of towels over the front of the paper towel tray. Close the cover.

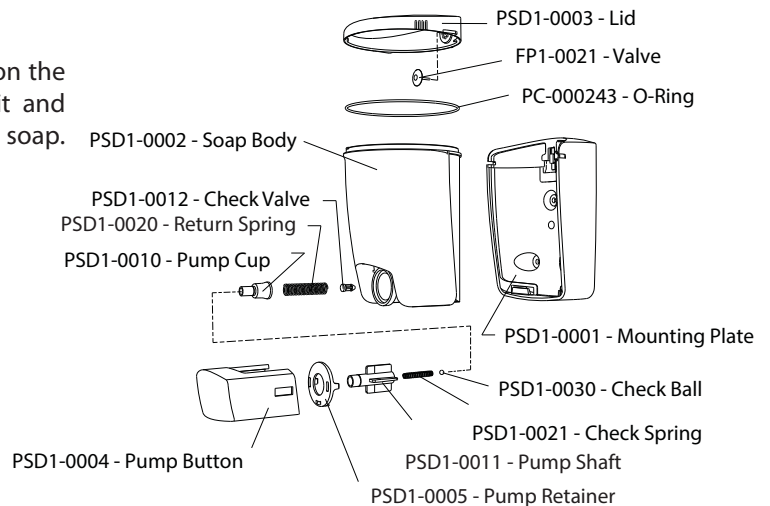
**TD04-1000 PJ Paper Towel Dispenser
Exploded View**



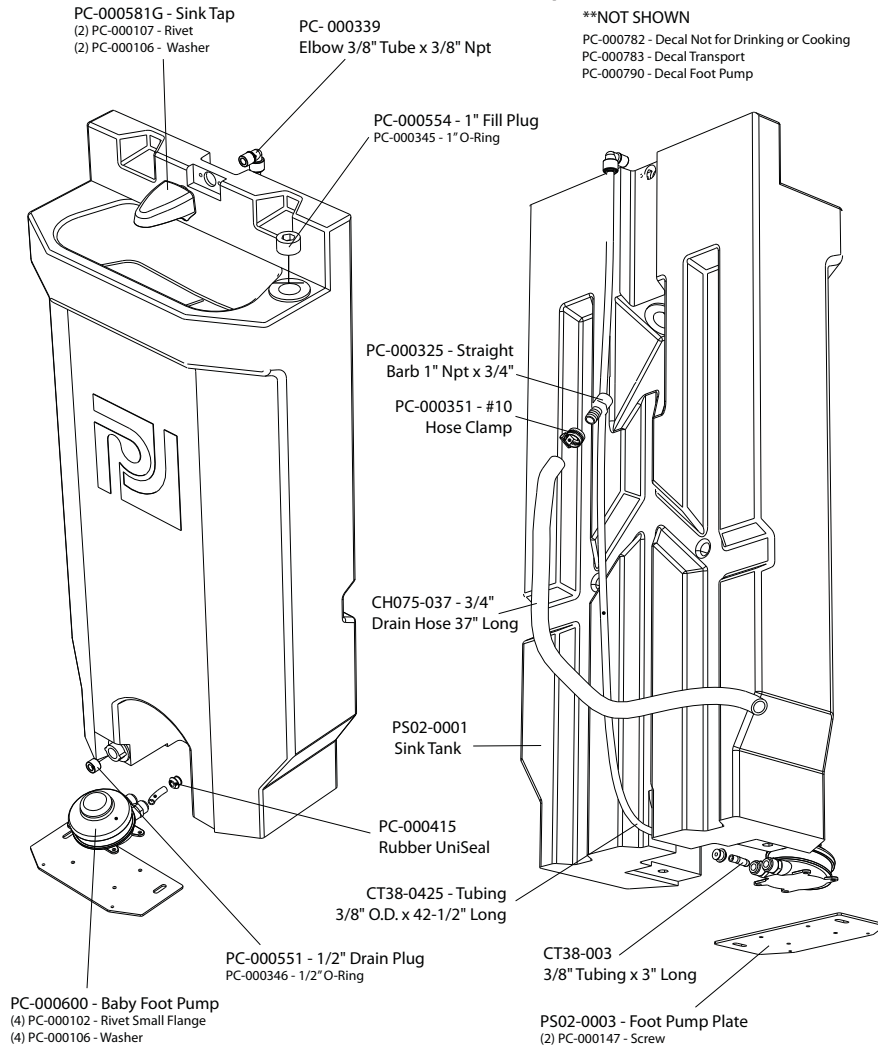
**PSD1-1000 - Soap
Dispenser Exploded View**

Filling the Soap Dispenser

Open the soap dispenser by twisting the lid. Locate the tab on the mounting plate at the rear of the dispenser, push in on it and slide the dispenser up and off. Fill with 30 fluid ounces of liquid soap. Refasten it to the mounting plate and twist the lid back on.



PS02-1000 Hand Wash Stand - Exploded View



CLEANING AND MAINTENANCE

Use a mild soap to clean all surfaces and component parts.

Minor scratches and abrasions can be lightly sanded or scrubbed with a mild abrasive cleaner (*such as "Soft Scrub"*) that contains calcium carbonate, hypochlorate bleach and detergents. Be sure to follow the cleaning product directions since these ingredients may cause hazardous gases when mixed with other chemicals. Rinse the cleaned area and buff with a conventional wax.

Some light scratches may also be hidden by using an industrial hot air gun.

If sink is installed add a "Fresh Sink Tablet" (*chlorinated tablet*) each time the sink is filled with water to keep the water fresh. For a source of cleaning, deodorizing and paper products contact:

POLYJOHN
2500 GASPARET AVE.
WHITING, IN 46394-2175
800-292-1305
www.polyjohn.com

MISSION STATEMENT

"Sinks-N-More is a family owned, state of the art, plastics manufacturing company dedicated to providing its employees with a work environment committed to excellence, and its customers with innovative products, services and technology that meet or exceed their requirements."

THANK YOU FOR PURCHASING POLYJOHN PRODUCTS!

Look for us on the Web @ www.polyjohn.com