

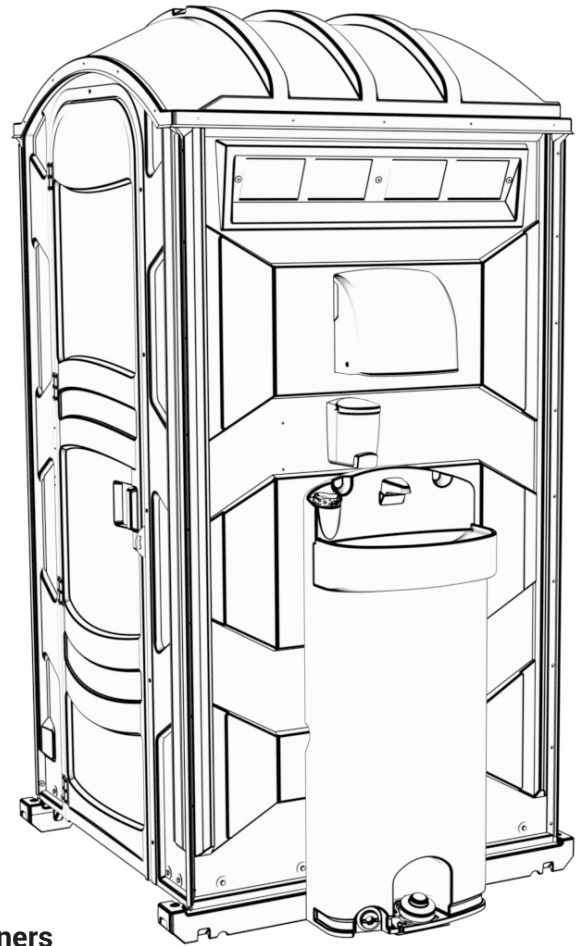


PJG3 Exterior Components No Trailer Installation Instructions

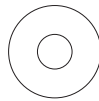
*GAP Compliant Unit
* Good Agricultural Practices

~~Tools Required~~

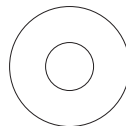
- Marker
- Liquid Soap
- Utility Knife
- Drill
- 13/64" Drill Bit
- 5/16" Drill Bit
- 2" Hole Saw
- 1-1/4" Hole Saw
- Phillips Screw Driver
- 7/16" Socket Wrench
- Rivet Gun w/3/16" tip



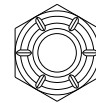
Full Size Scale Fasteners



(7) PC-000106 Washer



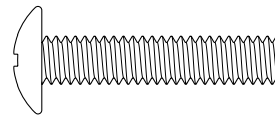
(5) PC-000123 Washer



(3) PC-000140
Nylon Lock Nuts



(7) PC-000102 Rivet



(3) PC-000174 Screws

**POLYJOHN
USA**

PolyJohn Enterprises Corp
2500 Gaspar Ave.
Whiting, IN 46394
Phone: 800-292-1305
Fax: 219-659-0625
www.polyjohn.com
info@polyjohn.com

**POLYJOHN
WORLDWIDE**

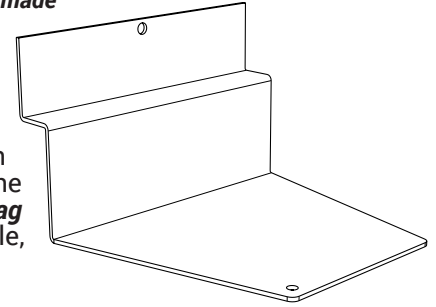
PolyJohn (UK) Ltd.
Equinox 1 Audby Lane
Wetherby, England LS22 7RD
Phone: 44 (0) 1937-583333
Fax: 44 (0) 1937-583322
www.polyjohn.co.uk
sales@polyjohn.co.uk

**POLYJOHN
CANADA**

PolyJohn Canada
P.O. Box 2300
199 Forest Plain Rd.
Orillia, Ontario LV3 6S2
Phone: 800-465-9590
Fax: 705-325-8250
www.polyjohncanada.ca
info@polyjohncanada.ca

Assembly Instructions

NOTE: The sink can be mounted on either the right or left side of the unit. The bracket for the sink is made to sit on top of the side of the base runner for support of the sink, so mounting the sink on the rear of the unit is not recommended.



STEP 1: MOUNT PJB3-0022 BRACKET

Determine which side the sink is to be installed on. Remove the 3 middle lag screws that hold the side panel to the base. Slide the bracket with the one hole up underneath the side panel and line up the middle hole with the hole in the bracket. Re-install the lag screw to hold the bracket and side into position. **Be careful not to overtighten the lag screw, stripping out the hole.** Re-install the two lag screws on either side of the middle, again be careful not to overtighten the screws.

STEP 2: SINK DRAIN HOLE LOCATION

With a marker, mark the drain hole location for the sink drain hose approximately 13-3/4" in from the rear vertical rib and up 19-1/2" from the bottom edge of the side wall panel. Cut a hole into the location marked using a 2" hole saw. **IMPORTANT: Make sure to cut into the wall panel only and not into the tank.** Cut a hole into the tank using a 1-1/4" hole saw (cutting through the hole just cut in the wall panel). From the outside push the PC-000417 - Uniseal into the hole in the tank.

STEP 3: PS2-1000 SINK INSTALLATION

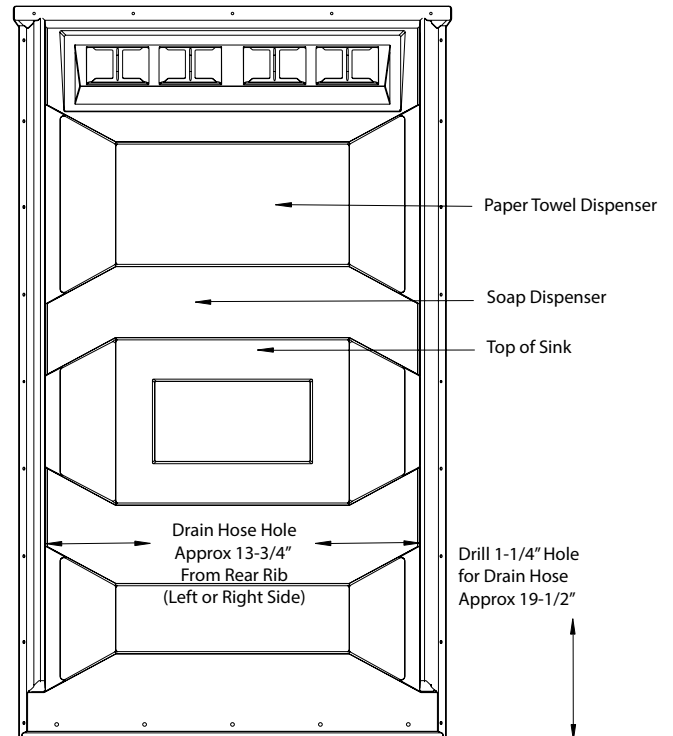
Place the sink into position against the side wall panel directly over the bracket. Push the hose end through the uniseal and into the tank. **NOTE:** Using liquid soap will help lubricate the hose when feeding through the uniseal. Lay the unit on its side with the bracket and sink facing up. Line up the hole on the bottom of the PJB3-0022 - PJB3 Gap Sink Bracket with the molded in slot at the bottom of the sink next to the foot pump. Fasten in place with a PC-000174 Screw from the bottom with a PC-000123 Washer and PC-000140 nut on the Top. Carefully set the unit upright, making sure that the sink doesn't tip over. Using a drill with a 5/16" bit, drill into the two recesses located near the top of the sink (to the left and right of the spigot, making sure to drill into the wall panel). With a 7/16" socket wrench and a phillips screwdriver, fasten the top of the sink to the wall by placing (2) PC-000174 - Screws with (2) PC-000123 - Washers into the holes just drilled from the outside with (2) PC-000123 - Washers and (2) PC-000140 - Nylon Lock Nuts on the inside.

STEP 4: PSD1-1000 SOAP DISPENSER INSTALLATION

Remove the top of the PSD1-1000 - Soap Dispenser by turning the lid of the dispenser counter-clockwise and lifting up. Remove the backing plate from the dispenser by pushing back on the tab at the top, and sliding the backing plate down. Place the backing plate up against the rear wall panel (centered in the rib just above the sink and to the left of the spigot). Using the top of the three mounting holes as a guide, drill three 13/64" holes into the wall panel. Rivet in place from the outside using (3) PC-000102 - Rivets with (3) PC-000106 - Washers on the inside. Place the body of the soap dispenser on the backing plate and re-install the lid.

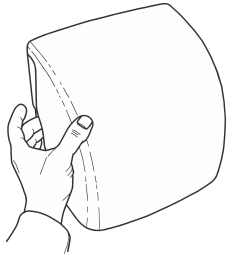
STEP 5: TD04-1000 PJ PAPER TOWEL INSTALLATION

Open up the TD04-1000 - Paper Towel Dispenser (for instructions see page 3). Place the dispenser up against the raised panel of the rear wall just below the fly screens (centering as far left as possible). Using the mounting holes as a drill guide, drill four 13/64" holes into the wall panel. Rivet in place using (4) PC-000102 - Rivets from the outside with (4) PC-000106 - Washers on the inside.



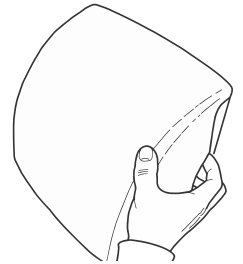
General Information

NOTE: These dispensers are designed to accept towels that are no wider than 9-1/2" wide, whether using single, multi-fold, or a roll towel. The recommended towels are the Georgia Pacific #23504 - single fold towel or the Baywest Ecosoft #46200 - roll towel. NOTE: The use of a roll towel complies with ADA requirements.



Opening the Paper Towel Dispenser

Position your hands on both sides of the dispenser cover (*as shown*). While pulling out on both sides lift up the cover and pull down towards yourself.

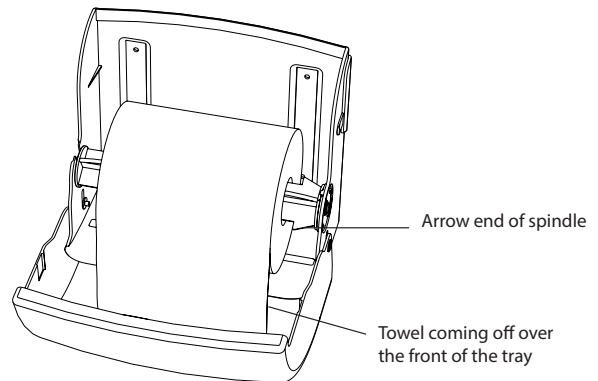
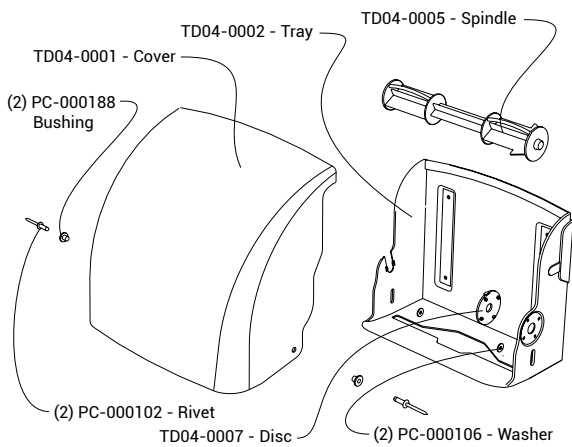


Filling the Dispenser

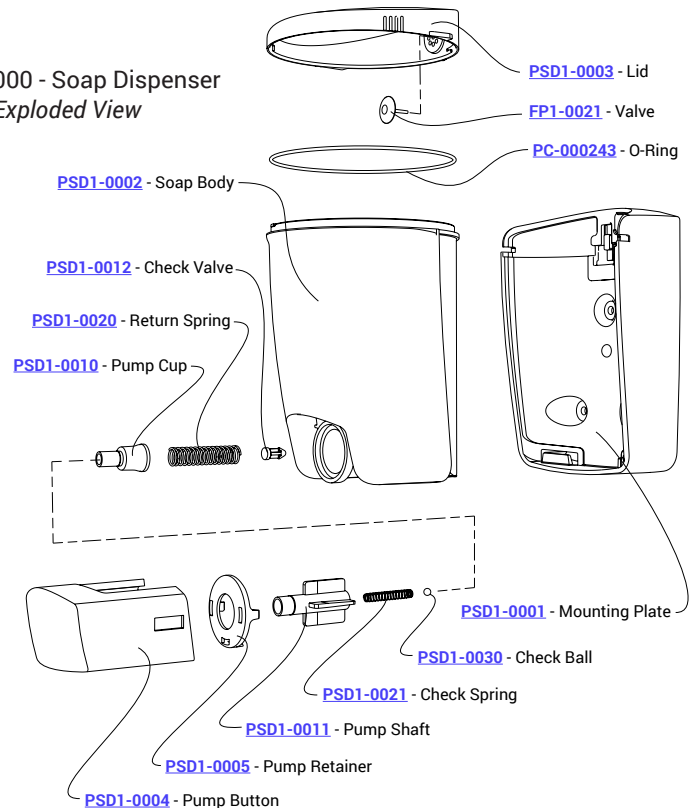
Filling with Fold Towels: Place the package of towels on the towel tray with the fold of the towel facing downward. Pull the first towel through the middle opening of the paper towel tray. Close the cover.

Filling with a Roll of Towels: Place the roll of towels on the spindle with the roll of towels coming off towards you with the arrow end of the spindle facing towards the right. Place the spindle into the right side of the dispenser first. Place the left side of the spindle into the groove on the left side of the dispenser and push down in place. Feed the roll of towels over the front of the paper towel tray. Close the cover.

TD04-1000 PJ Paper Towel Dispenser
Exploded View



PSD1-1000 - Soap Dispenser
Exploded View



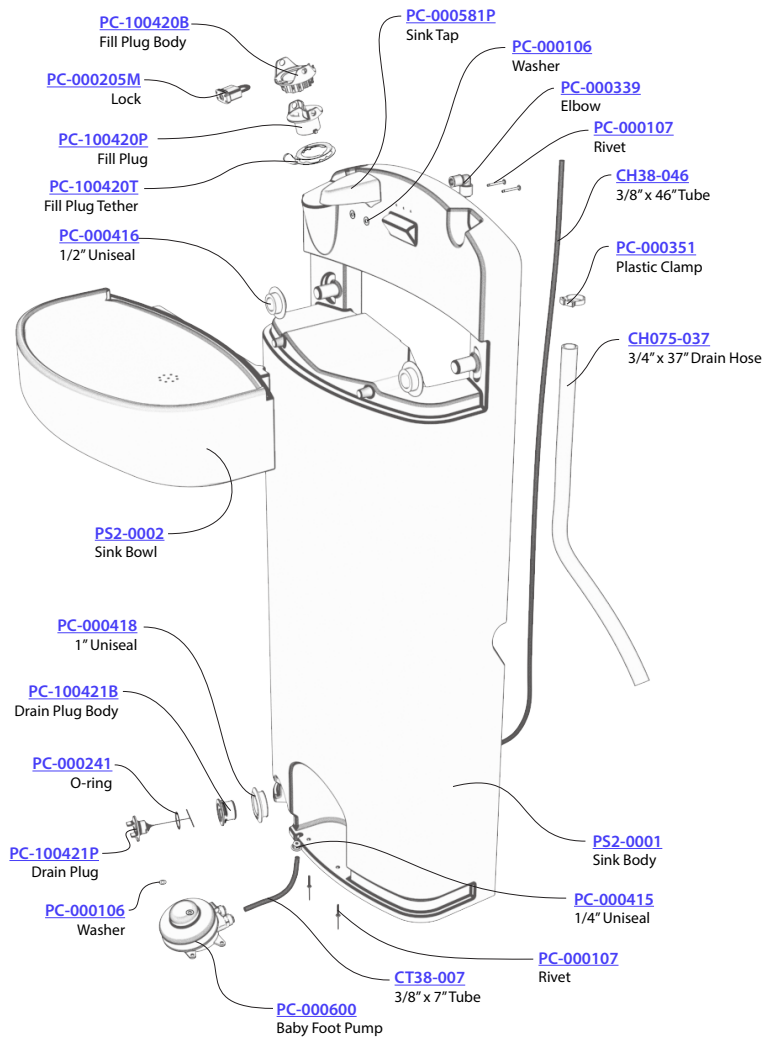
Filling the Soap Dispenser

Open the soap dispenser by turning the lid counter clockwise and remove. Fill with up to 30 ounces of liquid soap.

Maintenance and Care

- Use only mild cleaners with no abrasives using a soft cloth to clean all surfaces.
- Some silicone grease should be applied occasionally to the o-ring at the top of the soap container to keep the lid from sticking. Mineral oil should NEVER be used.
- If there is a chance for freezing, remove the dispenser and drain the soap. Be sure to remove the soap from the pump as well.

PS2-1000 Hand Wash Stand - Exploded View



CLEANING AND MAINTENANCE

Use a mild soap to clean all surfaces and component parts.

Minor scratches and abrasions can be lightly sanded or scrubbed with a mild abrasive cleaner (*such as "Soft Scrub"*) that contains calcium carbonate, hypochlorate bleach and detergents. Be sure to follow the cleaning product directions since these ingredients may cause hazardous gases when mixed with other chemicals. Rinse the cleaned area and buff with a conventional wax.

Some light scratches may also be hidden by using an industrial hot air gun.

If sink is installed add a "Fresh Sink Tablet" (*chlorinated tablet*) each time the sink is filled with water to keep the water fresh.

For a source of cleaning, deodorizing and paper products contact:

PROS CHOICE
2500 GASPAR AVE.
WHITING, IN 46394-2175
800-292-1305
<https://www.polyjohn.com/supplies/pros-choice.html>

OUR MISSION STATEMENT

"PolyJohn is a family owned, state of the art, plastics manufacturing company dedicated to providing its employees with a work environment committed to excellence, and its customers with innovative products, services and technology that meet or exceed their requirements."

THANK YOU FOR PURCHASING POLYJOHN PRODUCTS!

Look for us on the Web @ www.PolyJohn.com