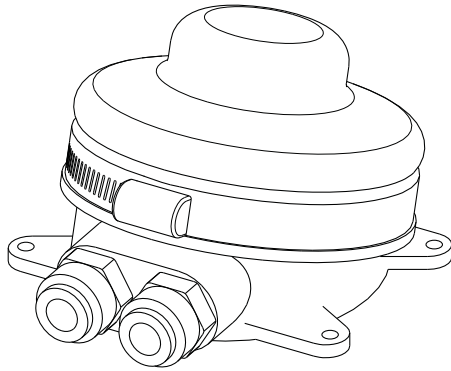




PC-000600 PJ Baby Foot Pump Technical Information

General Product Overview

The PC-000600 - PJ Baby Foot Pump is a small foot pump with 3/8" inlet and outlet ports designed to be used with 3/8 push in tubing. Mostly used for washing in a hands free sink, this pump can be used in a variety of applications. The pump has a built in check valve that will hold a prime between uses.



We suggest reading through the entire booklet prior to proceeding with use, service and or maintenance. Regular inspection of the pump is recommended. The pump and system should be completely drained before any maintenance is to be performed.

POLYJOHN USA

PolyJohn Enterprises Corp
2500 Gaspar Ave.
Whiting, IN 46394
Phone: 800-292-1305
Fax: 219-659-0625
www.polyjohn.com
info@polyjohn.com

POLYJOHN WORLDWIDE

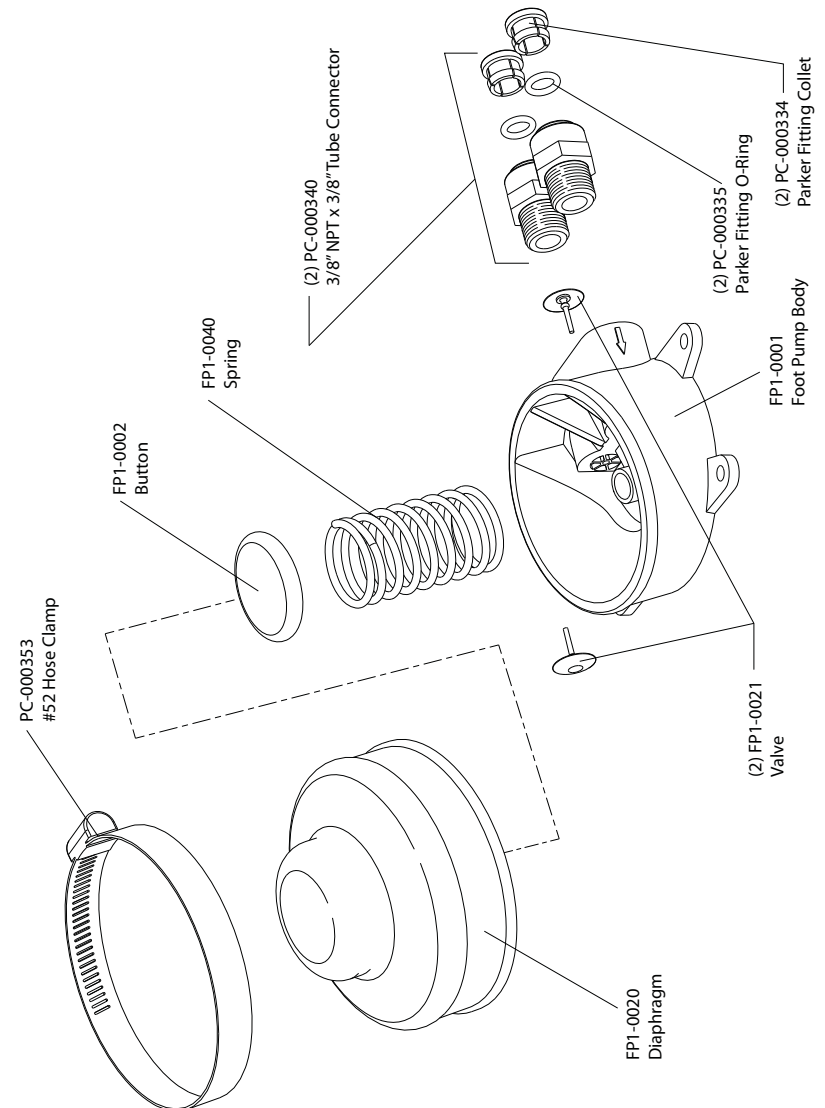
PolyJohn (UK) Ltd.
Equinox 1 Audby Lane
Wetherby, England LS22 7RD
Phone: 44 (0) 1937-583333
Fax: 44 (0) 1937-583322
www.polyjohn.co.uk
sales@polyjohn.co.uk

POLYJOHN CANADA

PolyJohn Canada
P.O. Box 2300
199 Forest Plain Rd.
Orillia, Ontario LV3 6S2
Phone: 800-465-9590
Fax: 705-325-8250
www.polyjohncanada.ca
info@polyjohncanada.ca

NOTE: An arrow is imprinted on the side of each port to indicate whether it is the inlet or outlet port. The port with the arrow facing towards the housing is the inlet port and the port with the arrow facing away from the housing is the outlet port.

Exploded View



Connecting/Disconnecting the Pump:

- To connect the pump, push in the 3/8" O.D. Tru-Seal tubing into the fitting of the foot pump by at least 3/4" .
- To disconnect the tubing from the pump, push in on the collet on the end of the fitting in the rear of the pump while pulling out on the tubing.

Service / Maintenance Information

Replacing the FP2-0021 - Flow Valves:

1. Unfasten the plate that the pump is mounted on from the sink and disconnect the tubing from the pump.
2. Using a flathead screwdriver, loosen and remove the PC-000353 - Hose Clamp from the FP1-0020 - Pump Diaphragm, and pull the diaphragm off of the foot pump.
3. Remove the FP1-0002 - Spring Button and FP1-0040 - Spring.
4. Using a 13/16" wrench, loosen and remove the two PC-000340 - 3/8" T - 3/8" MPT Male Connectors.
5. For the Inlet Port - From inside the FP1-0001 - Pump Housing pull the flap of the FP1-0021 - Flow Valve and remove. Replace the valve by pushing the stem of the flap valve through the center hole of the inlet port cartwheel with your thumb while pulling the stem of the valve with needle nosed pliers from the outside of the pump. (*making sure the stem pulls through and snaps into place*).
6. For the Outlet Port - On the outside of the Pump Housing using needle nosed pliers pull the flap of the flow valve from inside the port and remove. To replace the valve, gently squeeze the flap of the valve inward with needle nosed pliers. From outside of the port place the stem end of the valve up into the outlet port through the center hole of the outlet port and from inside the pump housing hold the stem with needle nosed pliers and pull the stem through (*making sure the stem pulls through to the inside of the pump housing and snaps into place*).

Replacing the O-rings and Collets:

1. Unfasten the plate that the pump is mounted on from the sink and disconnect the tubing from the pump.
2. Pull the collet out of the end of the intake and discharge fittings.
3. Using something small such as a small screwdriver, pry the o-rings out of the end of the fittings.
4. Insert the new o-rings and collets into the end of the fittings.

Winterizing

- Drain all water from the tank.
- Depress the foot pump to clear the lines.
- An RV & Marine Anti-Freeze may be used to flush through the pump.

NOTE: For use during winter months, use with brine to keep from freezing and possibly insulating the pipes and pump.

For a source of cleaning, deodorizing and paper products contact:

**SINKS-N--MORE
2500 GASPAR AVE.
WHITING, IN 46394-2175
800-292-1305 EXTENSION 514
www.sinksnmore.com**

We highly recommend membership in the Portable Sanitation Association International (PSAI); the worldwide authority on portable sanitation services. The PSAI, "Portable Sanitation Industry Certification Program" manual contains a wealth of information on standards and service procedures. For more information contact the PSAI:

PORTABLE SANITATION ASSOCIATION INTERNATIONAL (PSAI)
7800 METRO PARKWAY, SUITE 104
BLOOMINGTON, MINNESOTA 55425 USA
800-822-3020 / 612-854-8300 FAX 612-854-7560
www.psai.org

PolyJohn Enterprises Corporation publishes a series of technical manuals for the Portable Sanitation Association International. Contact your area sales representative for further details.

MISSION STATEMENT

"PolyJohn is a family owned, state of the art, plastics manufacturing company dedicated to providing its employees with a work environment committed to excellence, and its customers with innovative products, services and technology that meet or exceed their requirements."

THANK YOU FOR PURCHASING POLYJOHN PRODUCTS!

Look for us on the Web @ www.PolyJohn.com